

CONNECTING A SIEMENS SIMATIC S5 PLC TO YOUR NETWORK

Abstract

This document explains how to connect a Siemens Simatic S5 PLC to an Ethernet network through our family of Serial-to-Ethernet converters, SSE232. Read this Technical Note if you need to achieve remote connectivity between a PLC and a networked computer, using either any compatible programming software (for example, *S5 Programming tool for Windows*) or any SCADA, such as SIMATIC[®] Protocol/Pro V5.2 SP3 (protocol AS511) or Intellution[®] Fix32 (protocol AS511).

Used Hardware

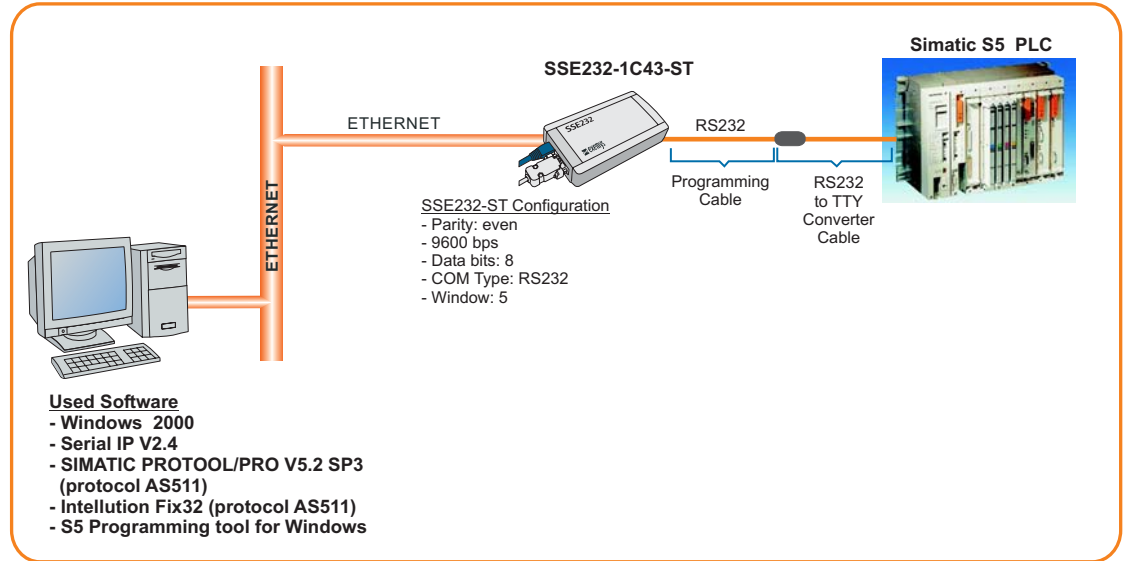
- Siemens SIMATIC S5 PLC
- Programming cable with an RS232 adapter (RS232 to TTY converter).
- Serial-to-Ethernet converter, Exemys SSE232-1C43-ST

Used Software

- Operating System: Windows 2000[®]
- Exemys Device Locator: software used to find any Exemys device attached to your LAN.
- Programming software: S5 Programming tool for Windows
- SCADA Software #1: SIMATIC Protocol/Pro V5.2 SP3 (protocol AS511)
- SCADA Software #2: Intellution Fix32 (protocol AS511)
- Serial-to-Ethernet software redirector, Serial IP V2.4 or higher.

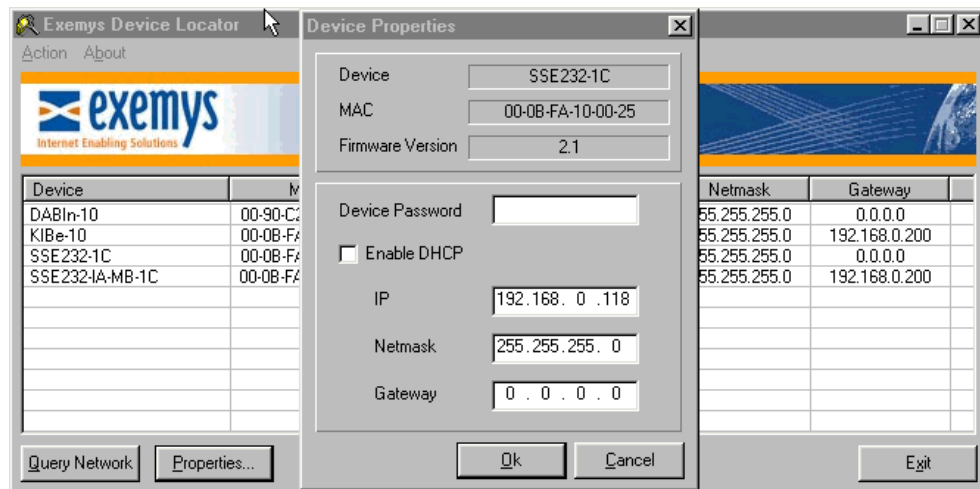
Procedure

Connect your computer, your Exemys converter, the adapter and your PLC as follows:



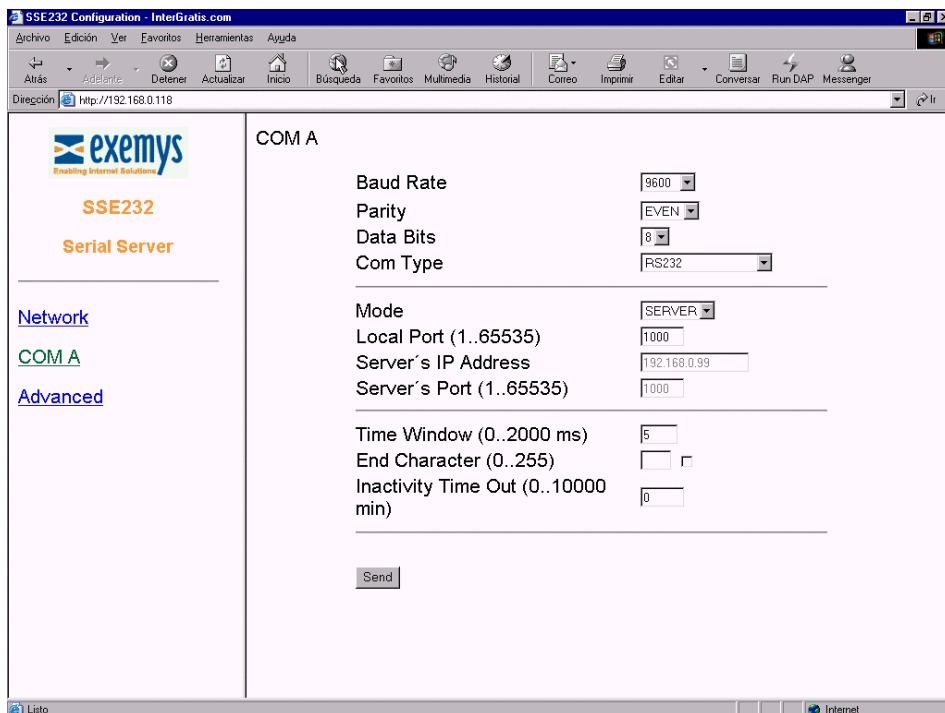
Configure your device with Exemys Device Locator

- Assign a valid IP address, Netmask and Gateway to your SSE232-ST.



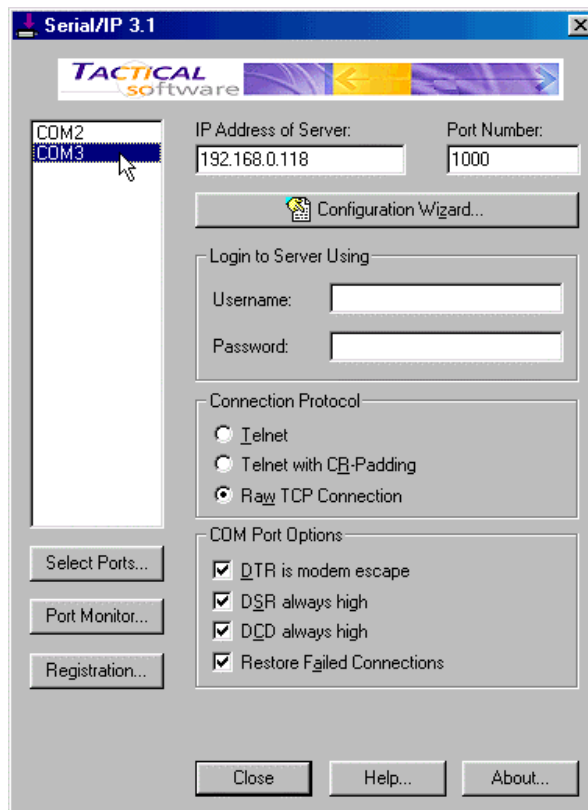
Configure the serial port in your SSE232-ST

- Baud rate: 9600 bps
- Parity: even
- Data Bits: 8
- Com Type: RS232



Configure Serial IP

- Install and run Serial IP. Add a virtual serial port. Configure the virtual port to route data into your local IP and TCP port 1000. Select *Raw TCP Connection* and enable all options in the *Com Port Options* menu.



Remote access to your PLC

If using a Programming Software

- Select the virtual serial port in the application (the one you configured using Serial IP).
- Configure the baudrate, 9.600 bps

If using a SCADA

- Select the virtual serial port in the SCADA (the one you configured using Serial IP) and configure the software to enable communication using AS511 protocol.
- Configure the baudrate, 9.600 bps

Following the steps described above, you will be able to use your PLC just as if it was connected directly to your PC.

For technical support please contact:
support@exemys.com

For sales please contact:
sales@exemys.com

www.exemys.com