

CONNECTING A SCHNEIDER TWIDO PLC TO THE NETWORK

Abstract

This document explains how to connect a Schneider® Twido® PLC to an Ethernet network through the Modbus/TCP to Modbus/RTU converter EGW1-IA-MB. Read this Technical Note if you need to achieve remote connectivity between a PLC and a networked computer, using Wonderware InTouch with a Modbus/TCP Driver.

Used Hardware

- Schneider® Twido® PLC (TWDLCAA10DRF)
- Exemys EGW1-1C4C-IA-MB, Modbus/TCP to Modbus/RTU converter.

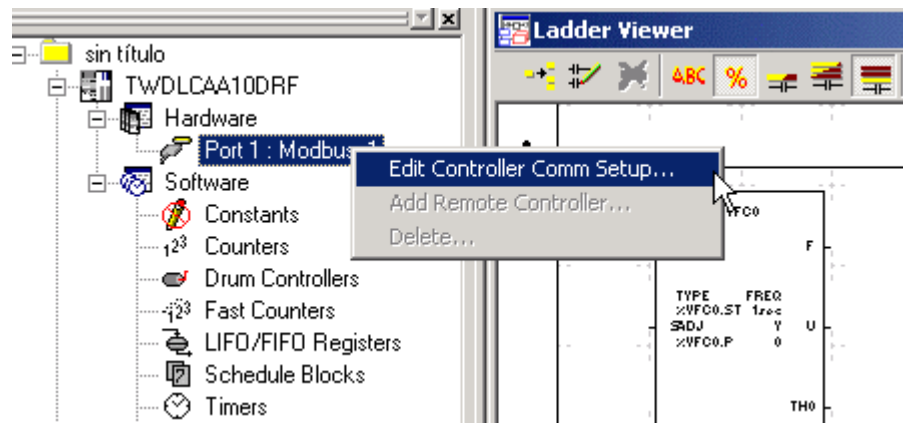
Used Software

- Operating System: Windows 2000®
- Exemys Device Locator: software used to find any Exemys device attached to your LAN
- Twido Soft V1.13
- Wonderware InTouch with a Modbus/TCP Driver

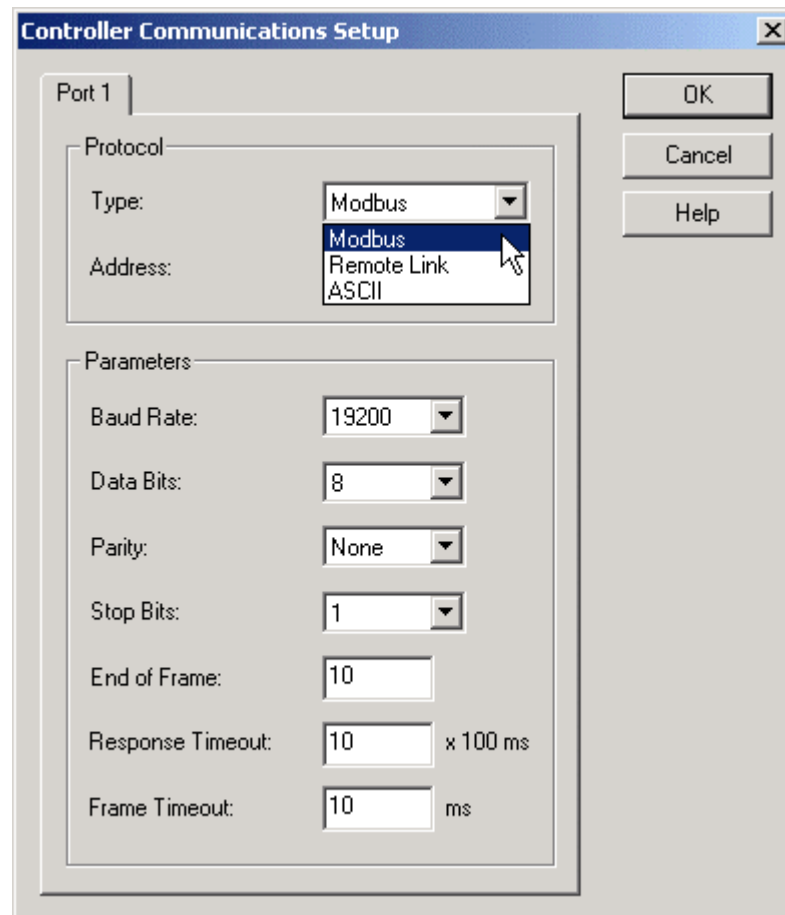
Procedure

- **Configure the TWIDO serial port**

In order to communicate the SCADA software to the PLC using Modbus you need to configure the PLC serial port to work Modbus/RTU. To do so, use the TWIDO Soft. Connect the PLC as usual to your computer and edit the PLC communication setup.

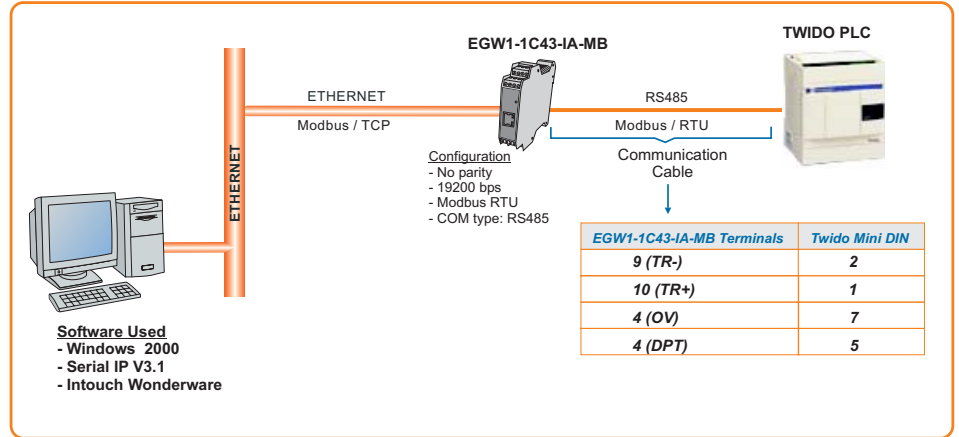


Select Modbus protocol, 19200 bps, 8 data bits and no parity.



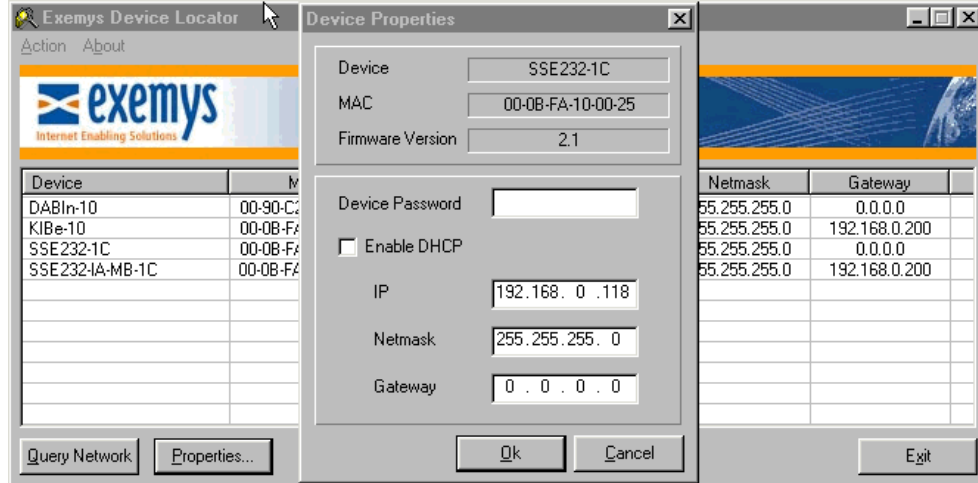
▪ **Wiring :**

Connect the computer, the converter and the PLC as follows:



▪ **Configure the serial server with Exemys Device Locator**

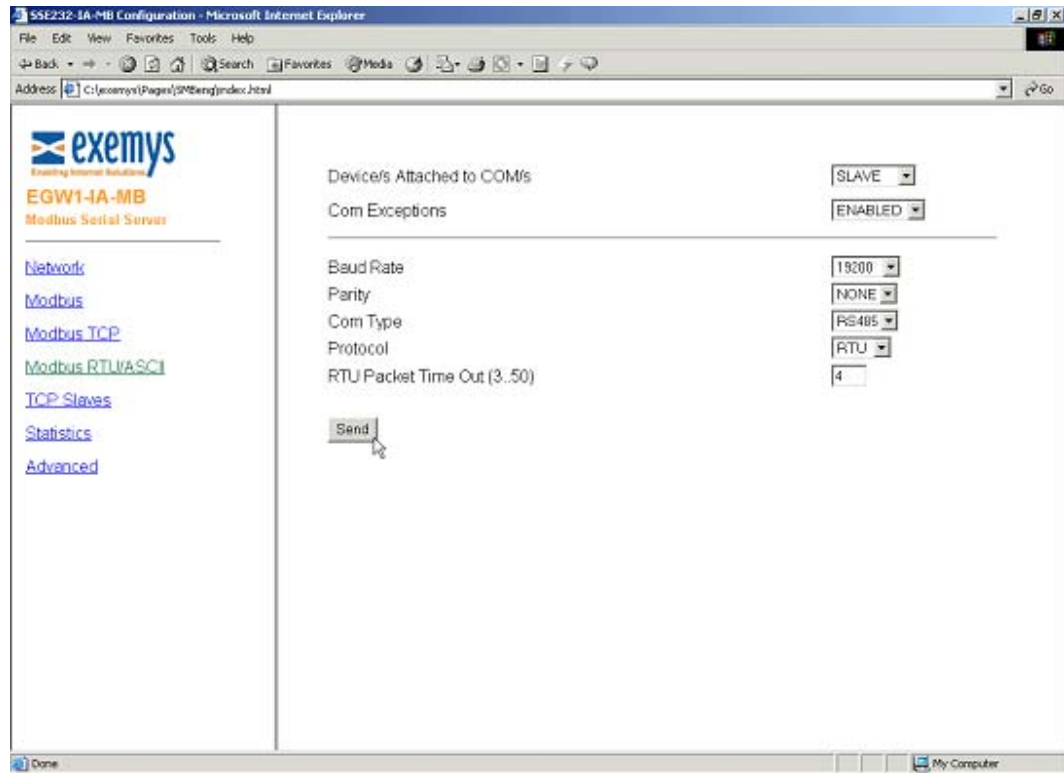
Assing a valid IP address, Netmask and Gateway to the EGW1-IA-MB.



- **Configure the EGW1-IA-MB serial port**

Log into the server using a web browser and set this parameters:

- Baud rate: 19200 bps
- Parity: none
- Format: Modbus/RTU
- Com Type: RS485



- **Configure the Wonderware I/O Server for MODBUS Ethernet**

Add a new Topic to the I/O server using the EGW1-IA-MB's IP address.

MBENET Topic Definition

Topic Name:

IP Address:

Dest_Index or Unit_ID:

Slave Device Type:

Use Concept Data Structures

Communication Channels

Unsolicited Messages

String Variable Style

Full length

C style

Pascal style

Register Type

Binary

BCD

Block I/O Sizes

Coil Read: Register Read:

Coil Write: Register Write:

Update Interval: msec Reply Timeout: sec

- **Create your application**

Once you have configured the PLC, the serial server and the I/O server create your own Wonderware application.

For technical support please contact:
support@exemys.com

For sales please contact:
sales@exemys.com

www.exemys.com



Exemys products are in constant evolution to satisfy our customers needs. For that reason, the specifications and capabilities are subject to change without prior notice. Updated information can be found at www.exemys.com
Copyright © Exemys, 2003. All Rights Reserved. **R3.01**
The Exemys logo is a registered trademark of Exemys LLC. All other trademarks mentioned in this document are the property of their respective owners.