

CONNECTING A SIEMENS SIMATIC S7-200 PLC TO THE NETWORK

Abstract

This document explains how to connect a Siemens Simatic S7-200 PLC to an Ethernet network through our family of Serial-to-Ethernet converters. Read this Technical Note if you need to achieve remote connectivity between a PLC and a networked computer, using the programming software *Step7 MicroWin32*.

Used Hardware

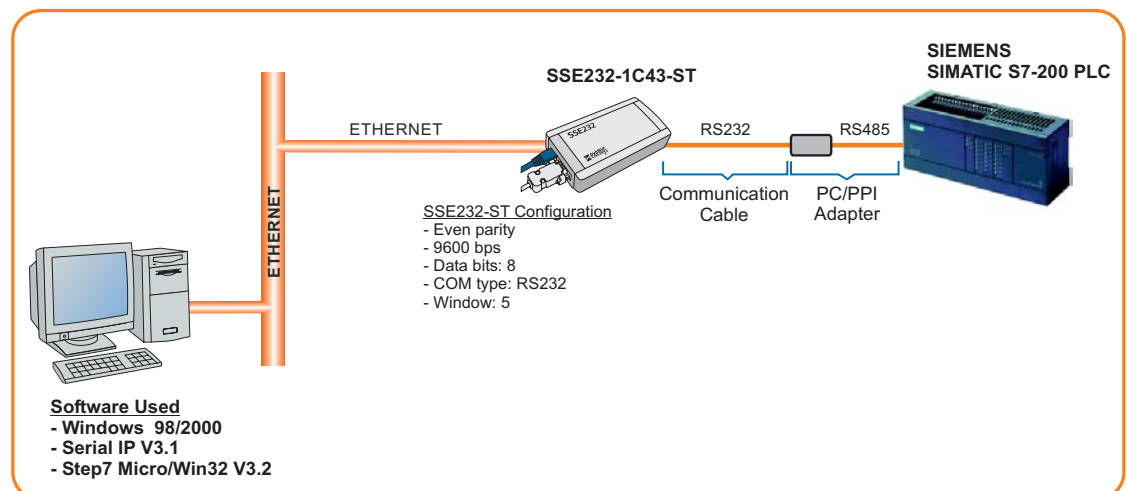
- Siemens SIMATIC ® S7-200 PLC.
- Programming cable, as shown below.
- Serial-to-Ethernet converter, Exemys SSE232-1C43-ST

Used Software

- Operating System: Windows ® 98 / 2000
- Exemys Device Locator: software used to find any Exemys device attached to your LAN
- Programming software: Step 7 MicroWin32 V3.2
- Serial-to-Ethernet software redirector: Serial IP V3.1.

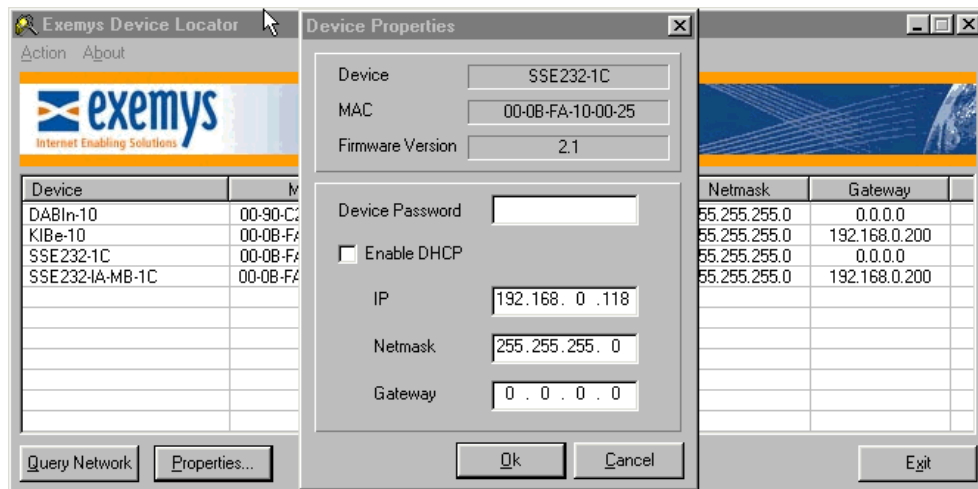
Procedure

Connect the computer, the converter and the PLC as follows:



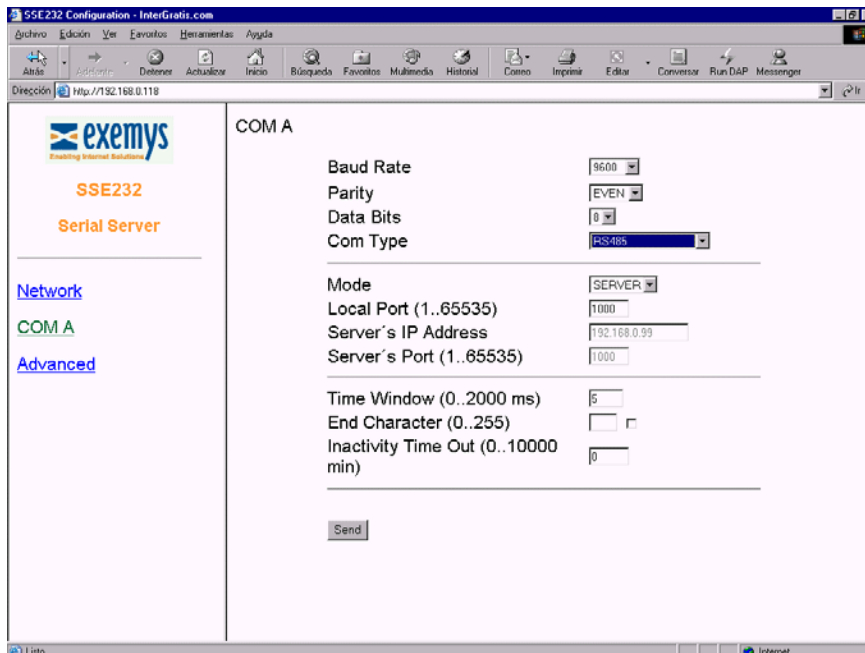
Configure your device with Exemys Device Locator

- Assign a valid IP address, Netmask and Gateway to your SSE232-ST.



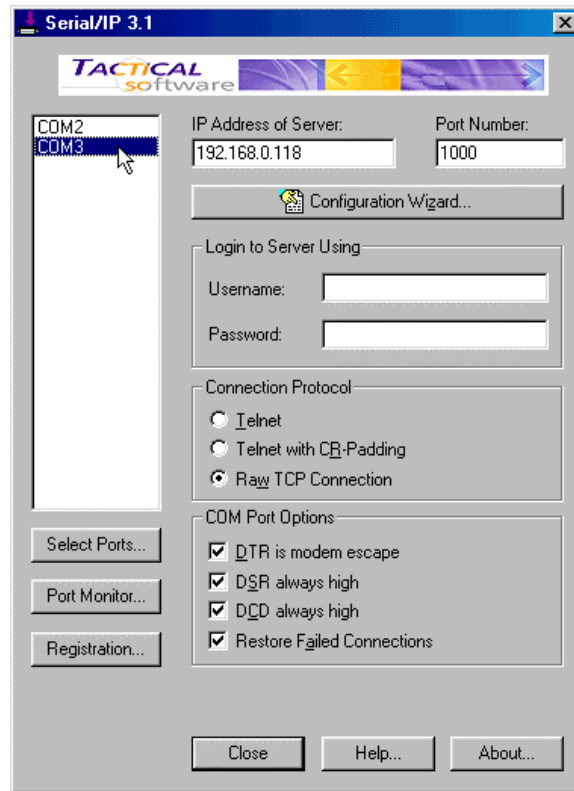
Configure the SSE232-ST serial port

- Baud rate: 9600 bps
- Parity: even
- Data Bits: 8
- Com Type: RS485
- Window: 5



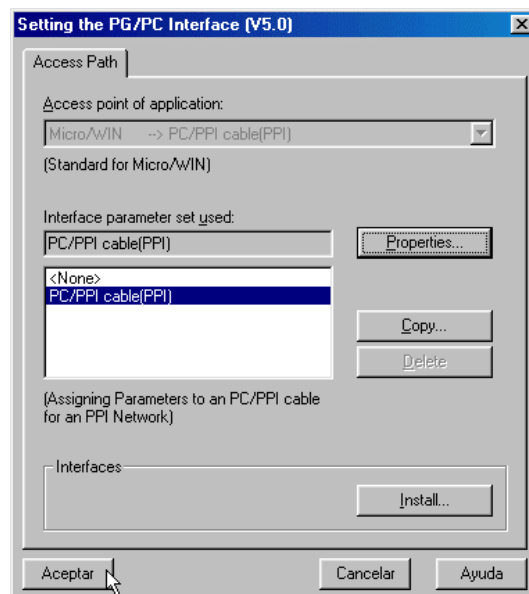
Configure Serial IP

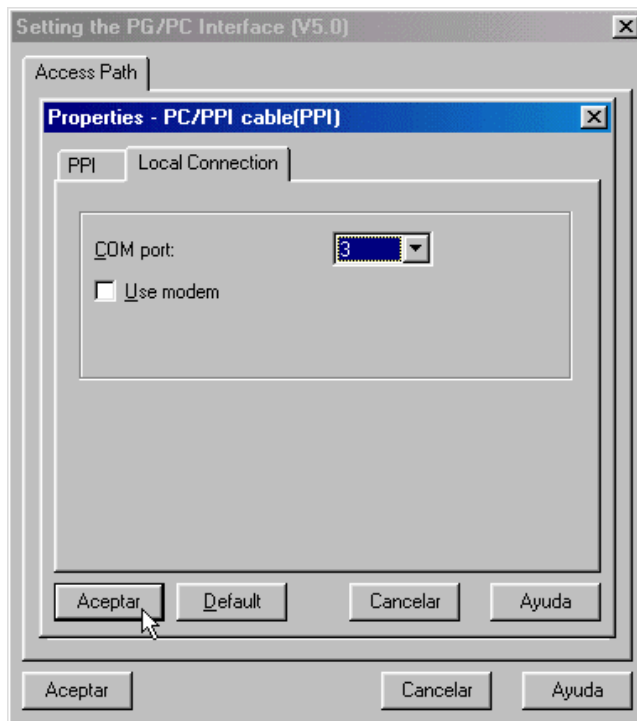
- Install and run Serial IP. Add a virtual serial port. Configure the virtual port to route data into your local IP and TCP port 1000. Select *Raw TCP Connection* and enable all options in the *Com Port Options* menu.



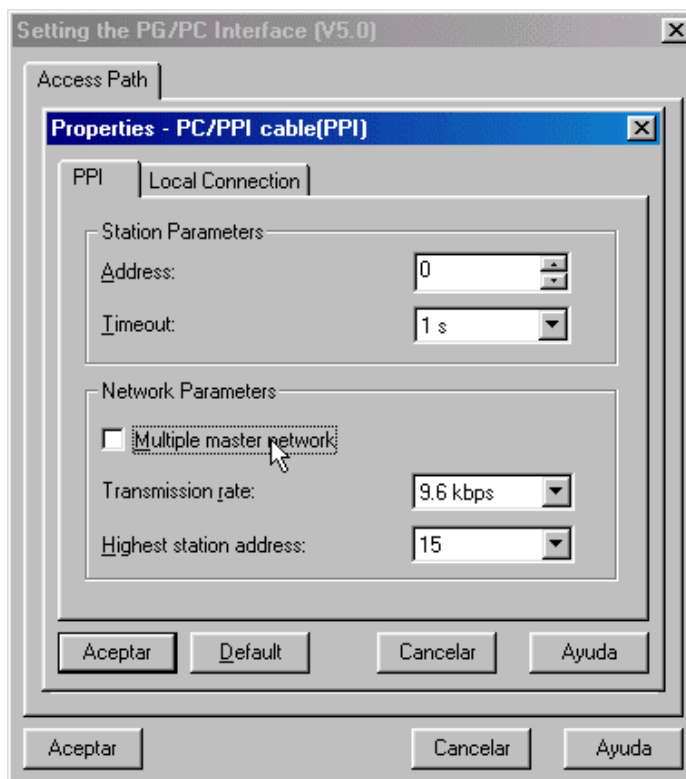
Configure the programming software

- Configure Step7 Micro to program an S7-200 PLC using the PC/PPI cable.
- Select the serial port you created

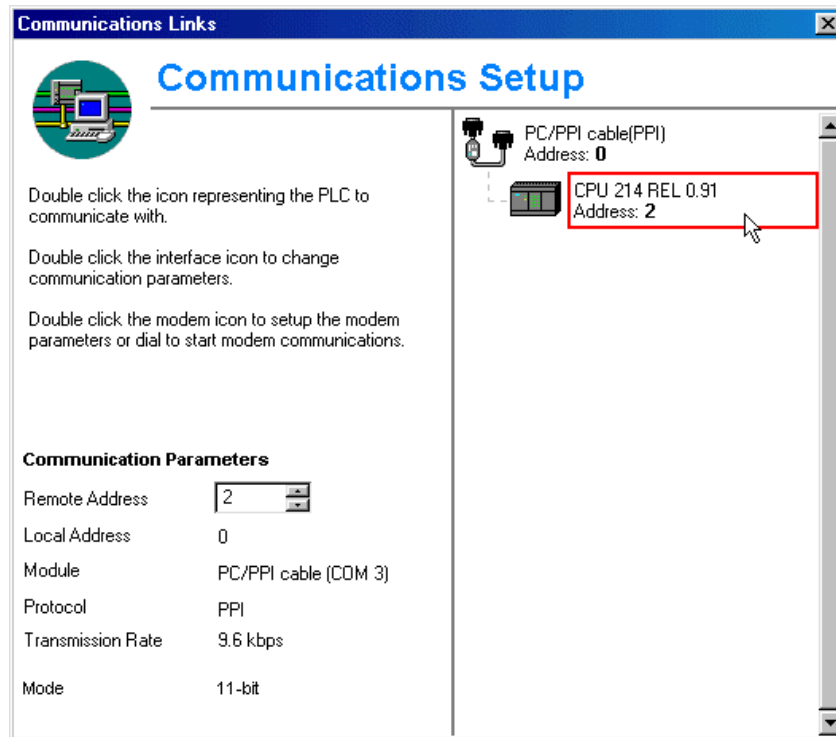




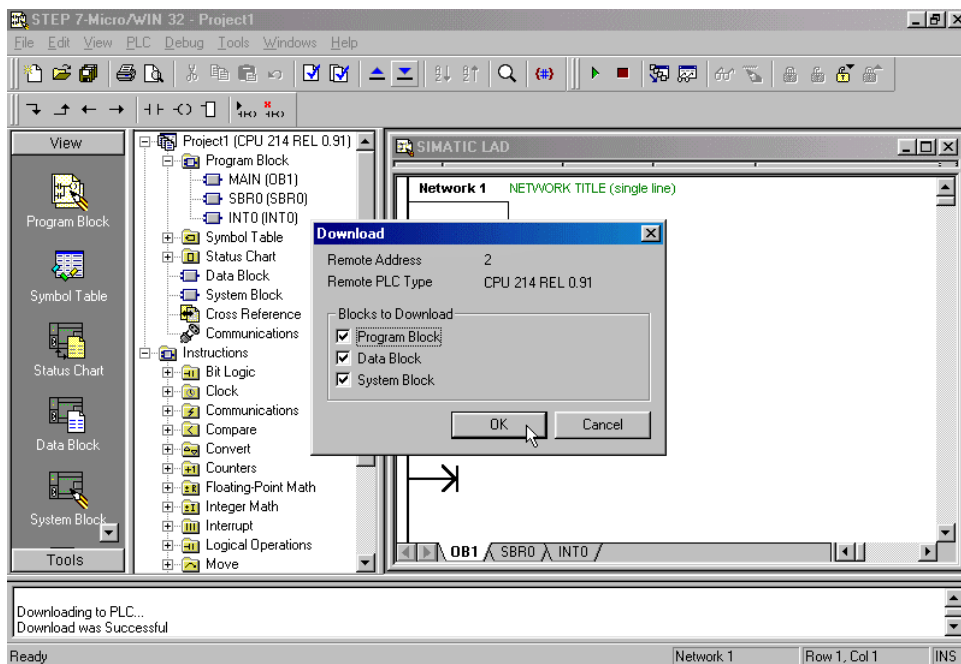
- Disable the option *Multiple master network*

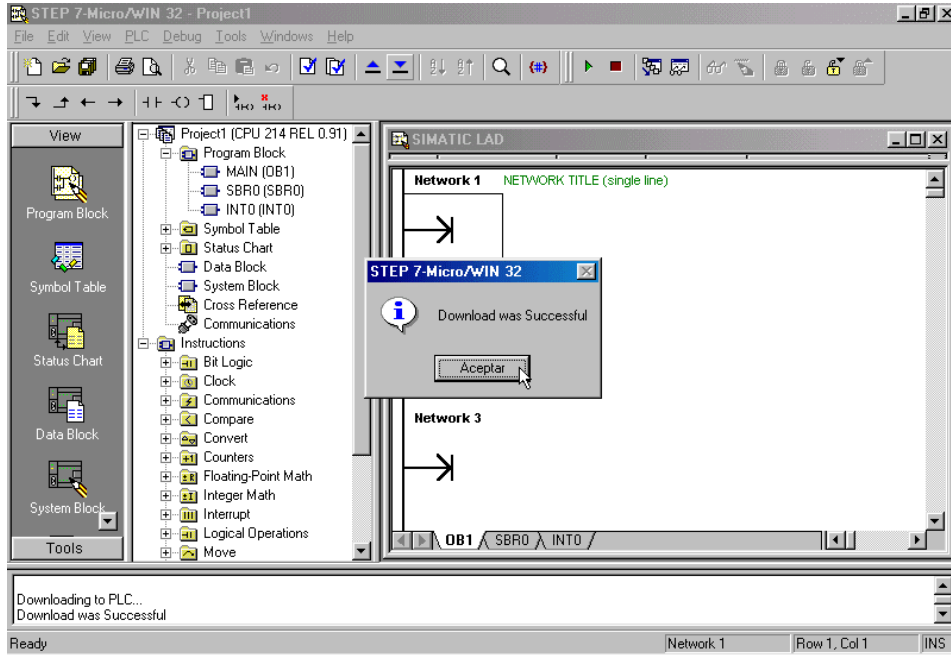


- Make a PLC look-up



Following the steps described above, you will be able to use your PLC just as if it was connected directly to your PC.

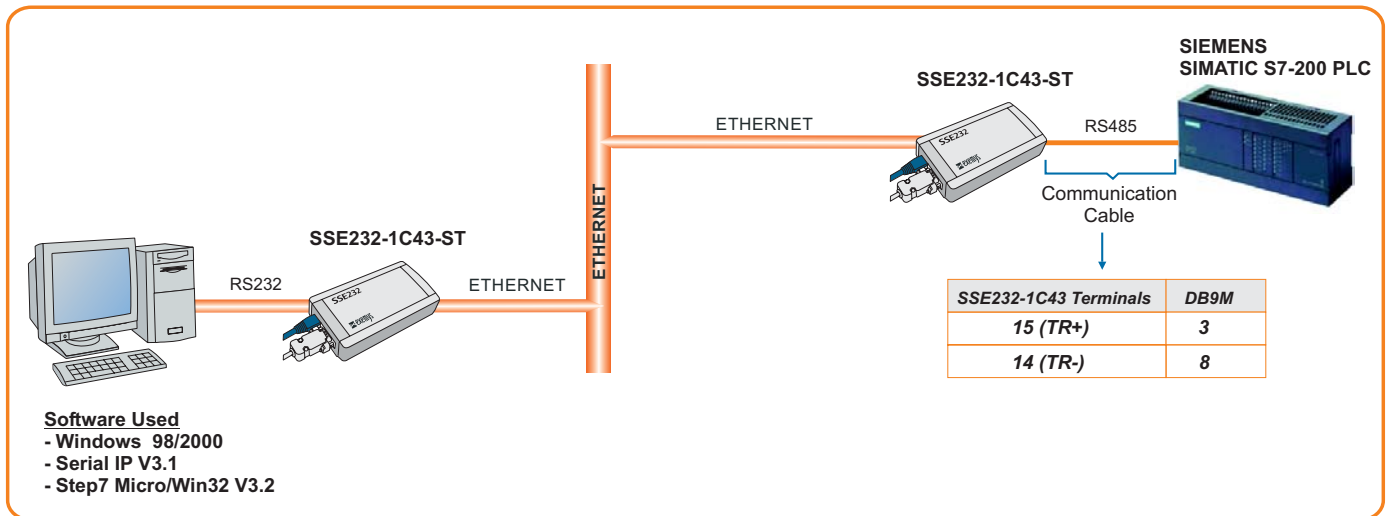




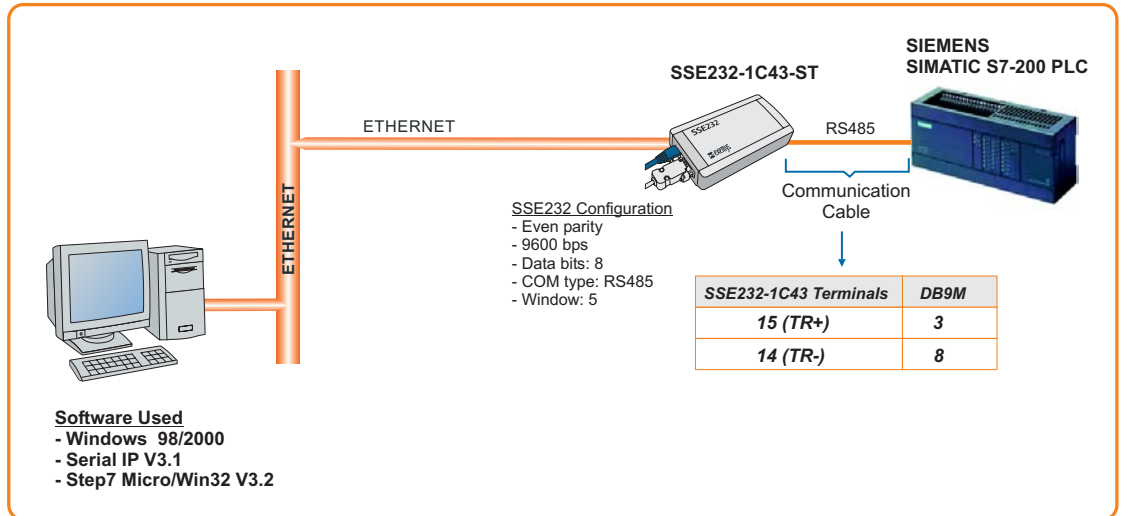
Other tested topologies

This PLC was also tested in the following modes:

A) Tunnel connection



B) Using the PC/PPI cable



For technical support please contact:
support@exemys.com

For sales please contact:
sales@exemys.com

www.exemys.com