

CONNECTING A KOYO DIRECT LOGIC 205 PLC TO THE NETWORK

Abstract

This document explains how to connect a Koyo Direct Logic 205 PLC to an Ethernet network through our family of Serial-to-Ethernet converters, Exemys SSE232. Read this Technical Note if you need to achieve remote connectivity between a Koyo PLC and a networked computer, using the programming software Direct Soft32 Programming V4.0.

Used Hardware

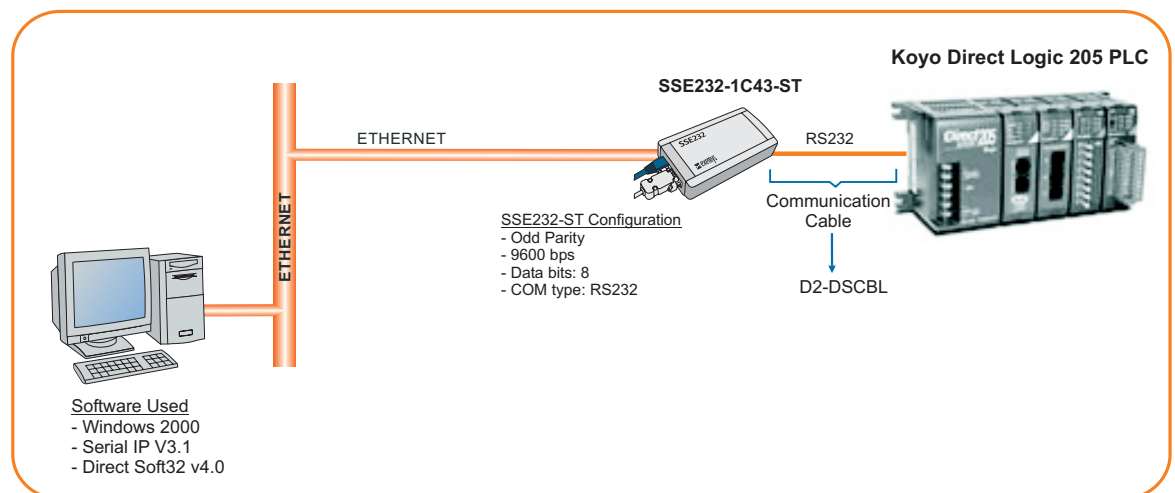
- Koyo Direct Logic ® 205 PLC (DL260 CPU)
- Serial-to-Ethernet converter, Exemys SSE232-1C43-ST
- Koyo Programming cable D2-DSCBL

Used Software

- Operating System: Windows ® 2000
- Exemys Device Locator: software used to find any Exemys device attached to your LAN
- Programming software: Direct Soft32 Programming V4.0
- Serial-to-Ethernet software redirector: Serial IP V3.1

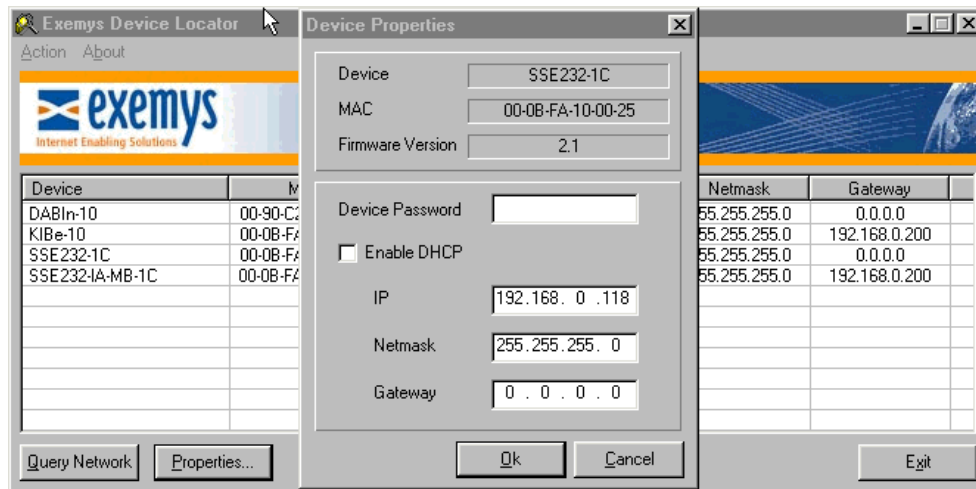
Procedure

Connect the computer, the SSE232-ST converter, and the PLC as follows:



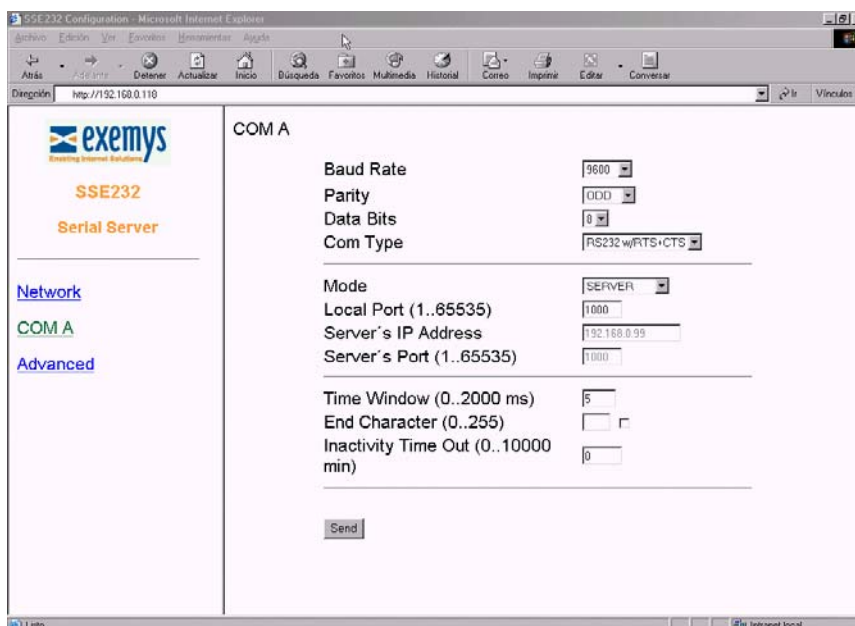
Configure your device with Exemys Device Locator

Assign a valid IP address, Netmask and Gateway to your SSE232-ST.



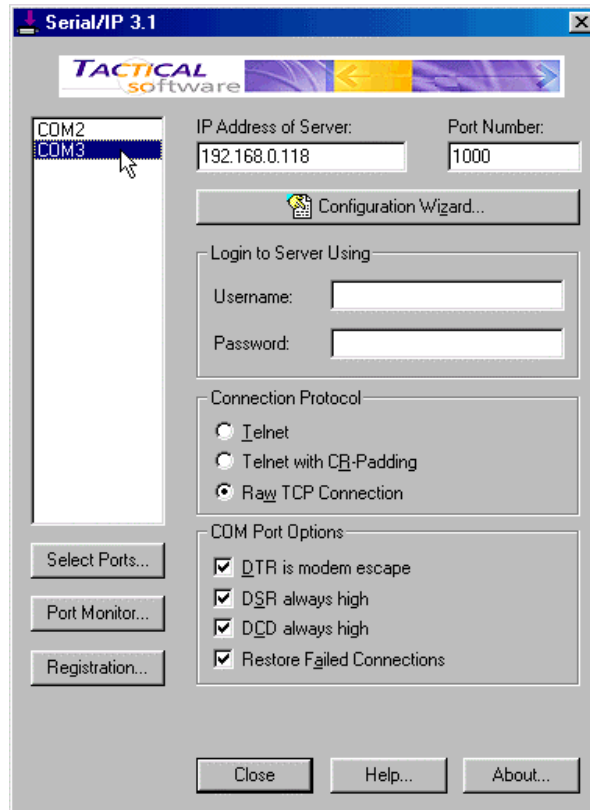
Configure the SSE232-ST serial port

- Baud rate: 9600 bps
- Parity: odd
- Data Bits: 8
- Com Type: RS232



Configure Serial IP

- Install and run Serial IP. Add a virtual serial port. Configure the virtual port to route data into your local IP and TCP port 1000. Select Raw TCP Connection and enable all options in the Com Port Options menu.



Configure the PLC programming software

- Select the virtual serial port you created with Serial IP.
- Baud rate: 9600 bps
- Parity: odd, 8 data bits

Following the steps described above, you will be able to use your PLC just as if it was connected directly to your PC.

For technical support please contact:
support@exemys.com

For sales please contact:
sales@exemys.com

www.exemys.com



Exemys products are in constant evolution to satisfy our customers needs. For that reason, the specifications and capabilities are subject to change without prior notice. Updated information can be found at www.exemys.com
Copyright © Exemys, 2003. All Rights Reserved. R3.00
The Exemys logo is a registered trademark of Exemys LLC. All other trademarks mentioned in this document are the property of their respective owners.