

CONNECTING A TOSHIBA EX10-M40 PLC TO YOUR NETWORK

Abstract

This document explains how to connect a Toshiba EX10-M40 PLC to an Ethernet network through our family of Serial-to-Ethernet converters, SSE232. Read this Technical Note if you need to achieve remote connectivity between a PLC and a networked computer, using PDD 250 V3.0.

Used Software

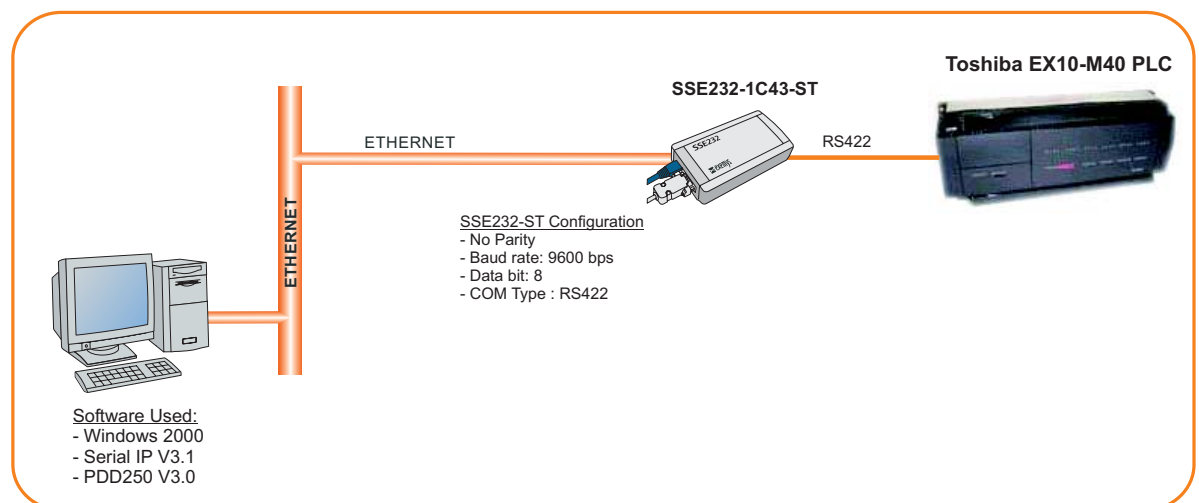
- Operating system: Windows 2000
- Exemys Device Locator
- Programming software: PDD 250 V3.0
- Serial-to-Ethernet software redirector, Serial IP V3.1

Used Hardware

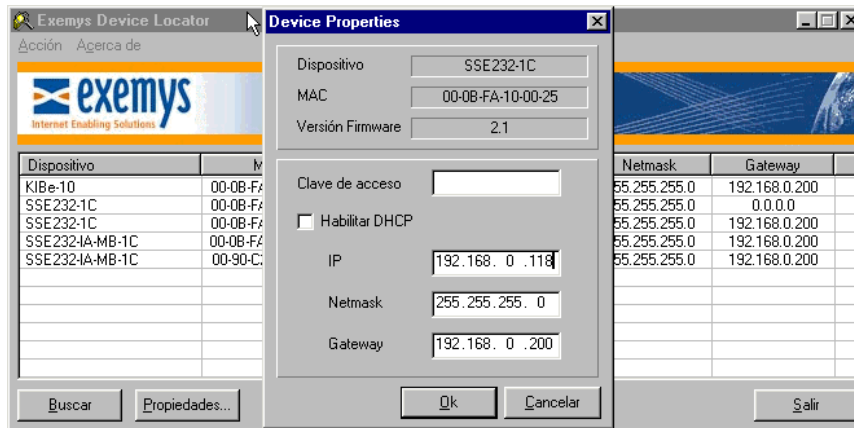
- Toshiba EX10-M40 PLC
- Exemys SSE232-1C43-ST Serial-to-Ethernet Converter
- Personal Computer

Procedure

Connect the computer, the converter and the PLC as follows:

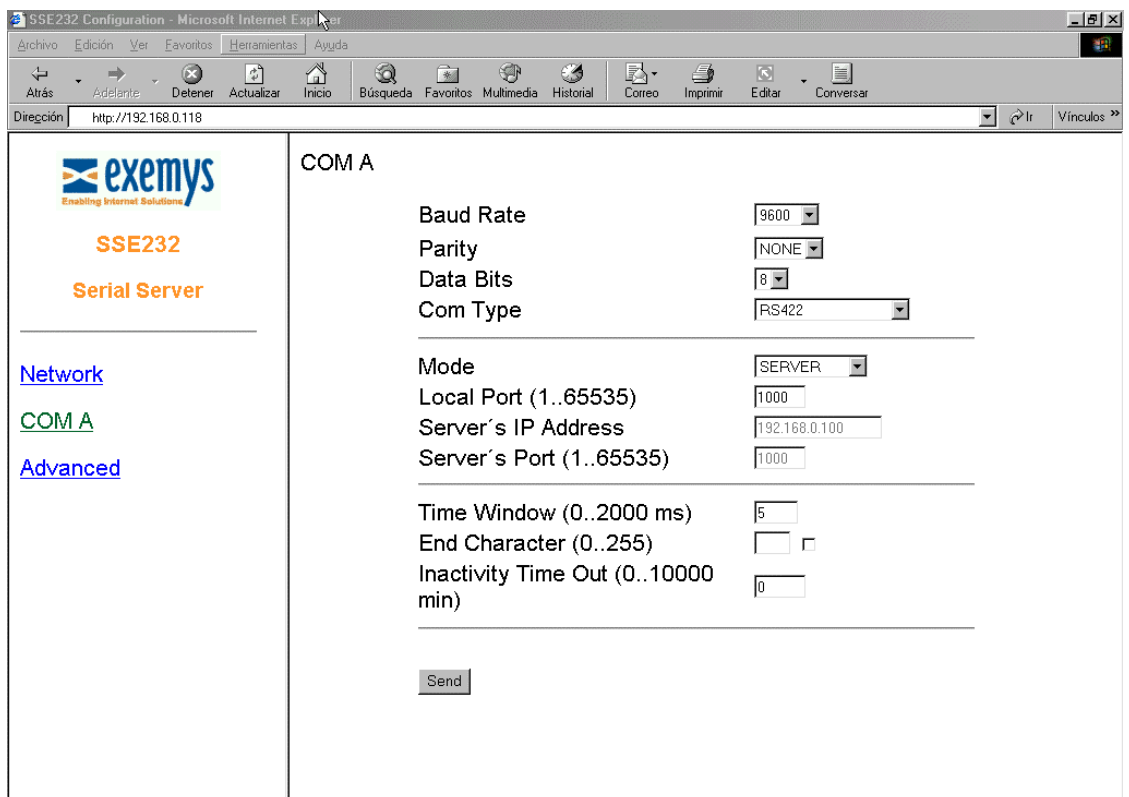


- Assign a valid IP address to SSE232-ST using Device locator



Configure SSE232-ST 's serial port:

- Baud rate: 9600 bps
- No Parity
- Data Bits: 8
- Com Type: RS422



PDD 250 Programming Software

PDD 250 V3.0 cannot modify serial port parameters. They were fixed to:

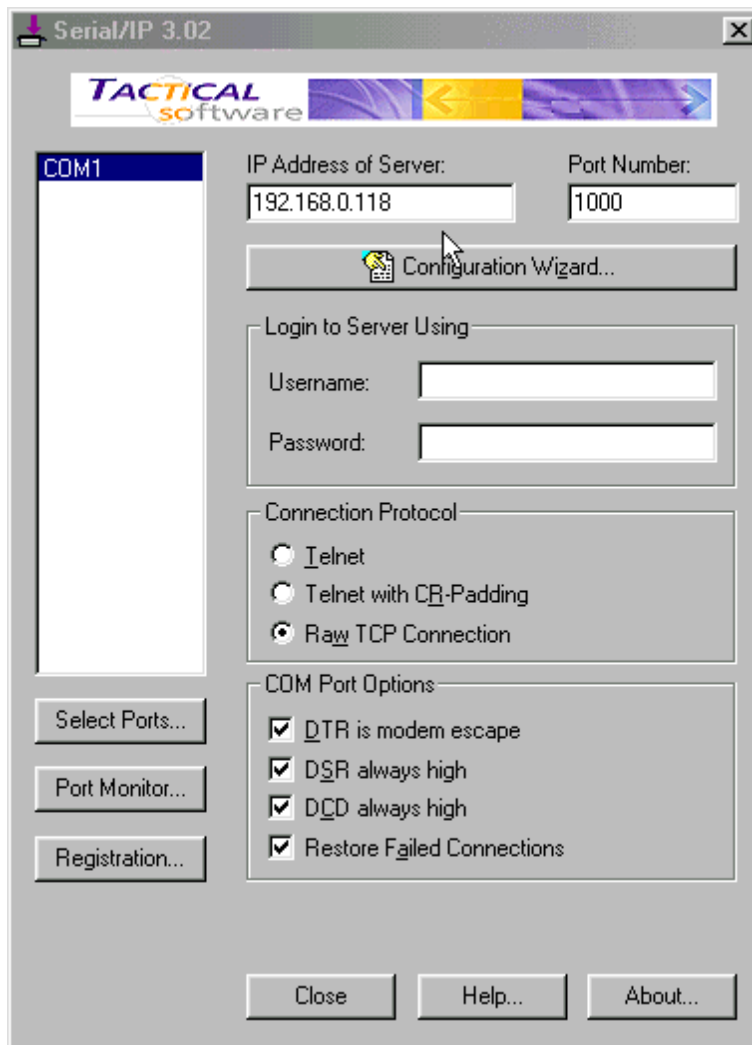
- Bitrate: 9600 bps
- No parity, 8 data bits
- Serial Port: COM 1

In order to establish a connection using Serial IP, COM1 was initially disabled by computer's BIOS Setup. Then, we configured COM1 as a virtual port (see Serial IP configuration).

Configure Serial IP as follows

- Install Serial IP driver, add COM1 as a virtual serial port, configure SSE232-ST's IP address and TCP port 1000. Choose *Raw TCP Connection* and enable all of the options available at *Com Port Options* tag.

NOTE: If SerialIP fails to add a virtual COM1 after it was physically disabled by BIOS SETUP, please contact us: support@exemys.com



After SerialIP was properly configured, you will be able to use your PLC just as if it was connected directly to your PC.

For technical support please contact:
support@exemys.com

For sales please contact:
sales@exemys.com

www.exemys.com



Exemys products are in constant evolution to satisfy our customers needs. For that reason, the specifications and capabilities are subject to change without prior notice. Updated information can be found at www.exemys.com
Copyright © Exemys, 2003. All Rights Reserved. R3.00
The Exemys logo is a registered trademark of Exemys LLC. All other trademarks mentioned in this document are the property of their respective owners.